

Climate Change

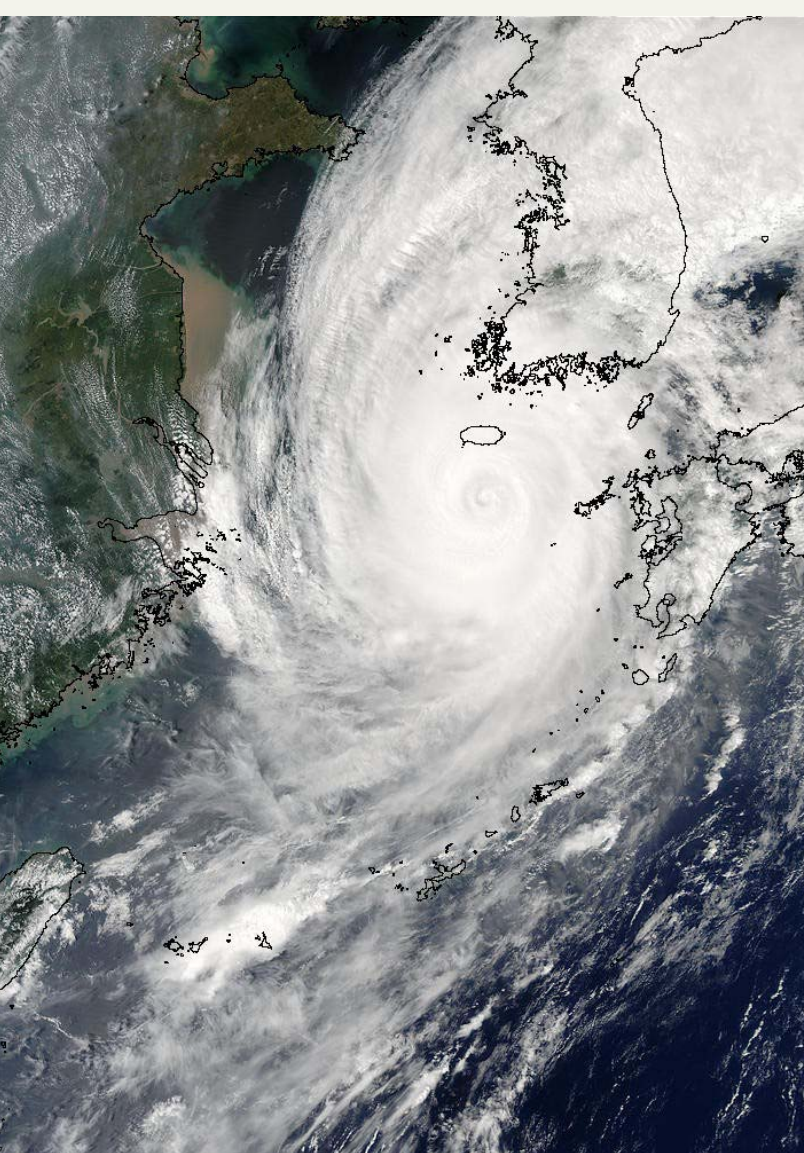
Threats and opportunities for the insurance industry

Dirk Reinhard



Münchener Rück
Munich Re Group

What are the future challenges?



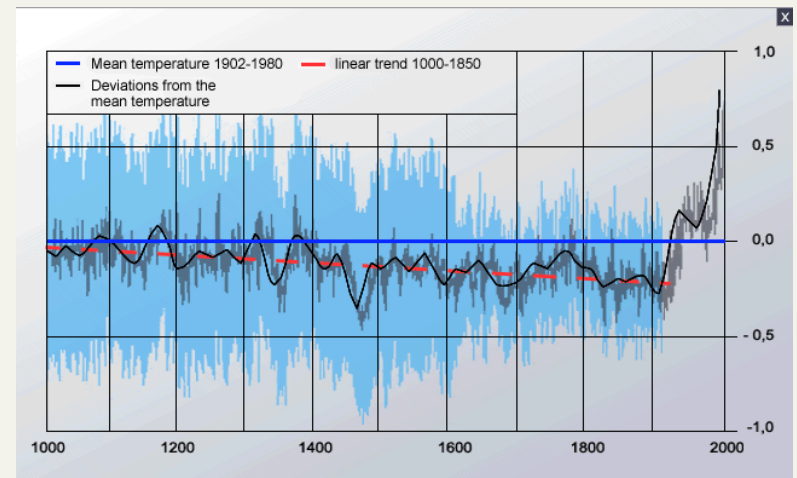
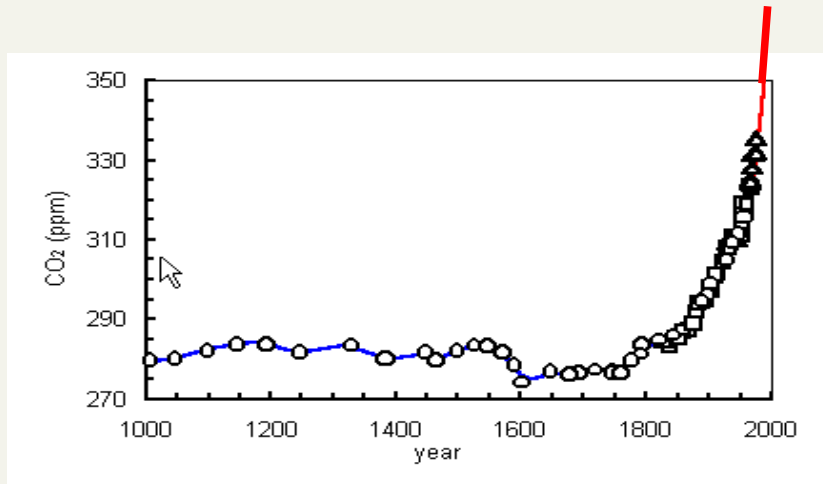
Typhoon Maemi – 12th September 2003

What are the future challenges?



Typhoon Bart – 22nd -25th September 1999

What are the future challenges?



Great Weather Related Natural Disasters 1950-2002

Decade comparison								
	Decade 1950-1959	Decade 1960-1969	Decade 1970-1979	Decade 1980-1989	Decade 1990-1999	last 10 1993-2002	Factor 80s : 60s	Factor last 10: 60s
Number	13	16	29	44	74	58	2.8	3.6
Economic losses	41.1	54.0	81.5	128.4	432.2	333.7	2.4	6.2
Insured losses	unknown	6.0	11.9	23.6	99.7	60.1	3.9	10.0

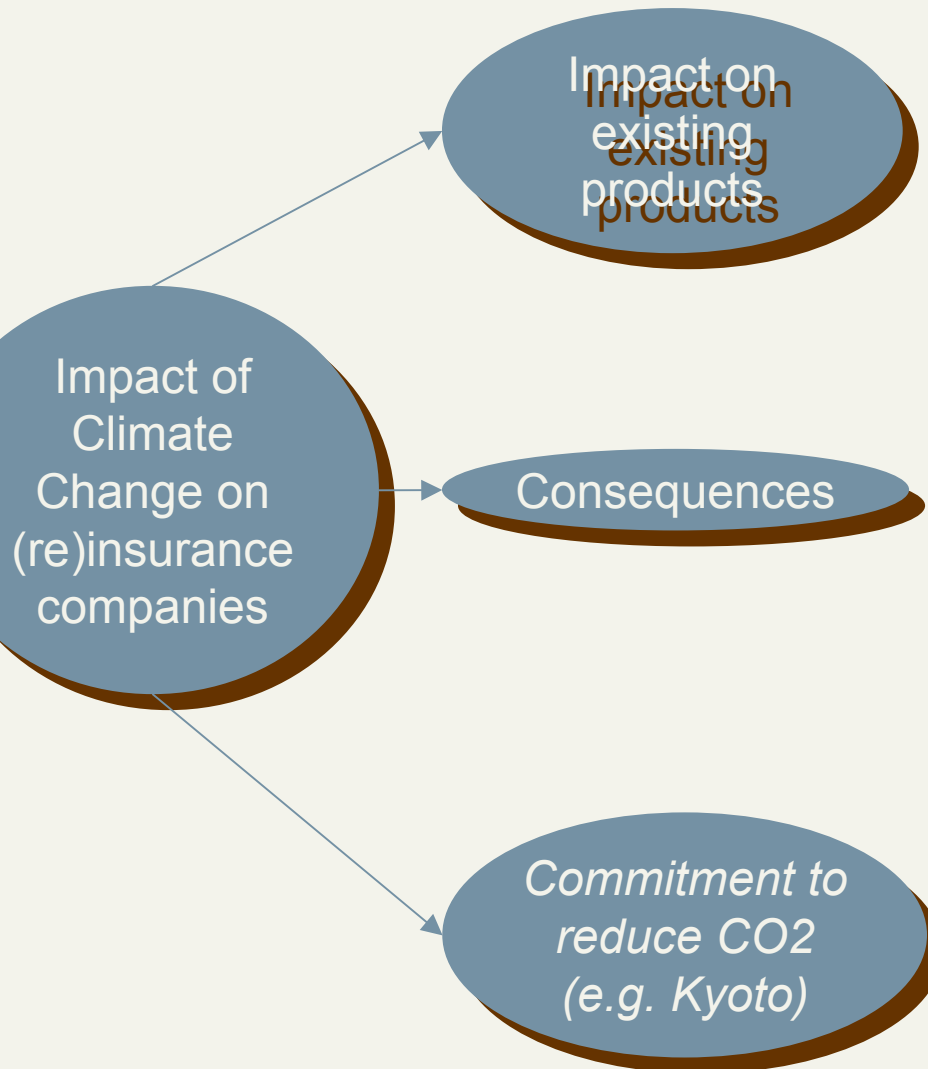
Losses in US\$ billion - 2002 values

MRNatCatSERVICE

As of Januar 31, 2003

© 2003 Geo Risks Research Dept., Munich Re

Impacts of climate change



- Weather related disaster losses increase
- Risk aggravation
- Possible implications for value of asset portfolio of an insurance company
- Limits of insurability?
- Prospective underwriting
- New or adopted insurance products
- Capital allocation
- Terms & Conditions
- New investment opportunities
- Insurance companies are no significant CO₂ emitters, therefore no direct threat
- However: Influence on the decision making process

Thank you for your attention!

Dirk Reinhard

dreinhard@munichre.com



Münchener Rück
Munich Re Group