



Sustainable Building & Construction Initiative

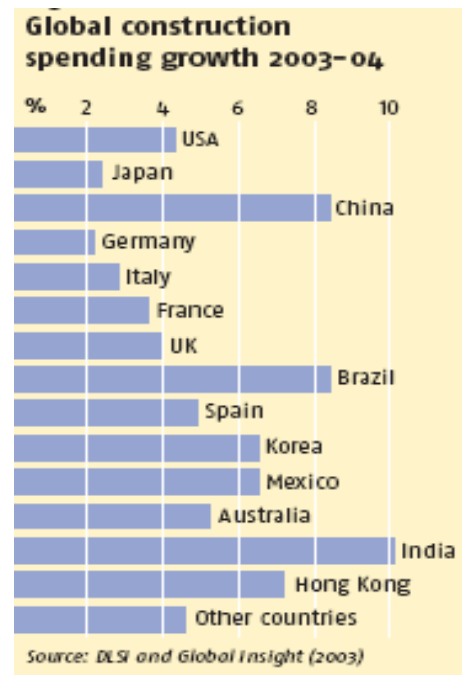
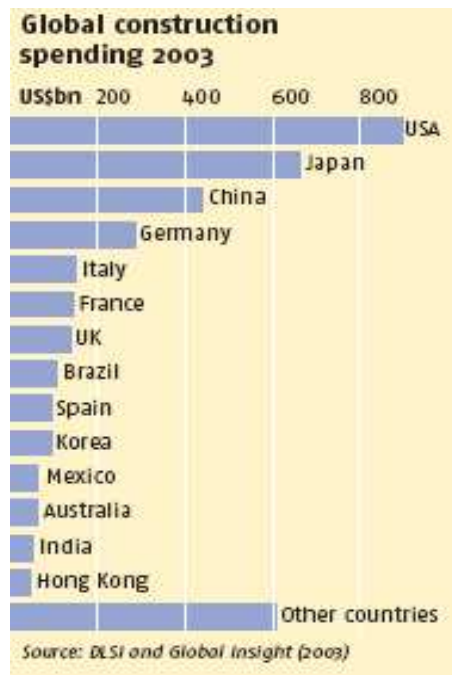


Inhee Chung
London, 29-30 June 2006

Key figures

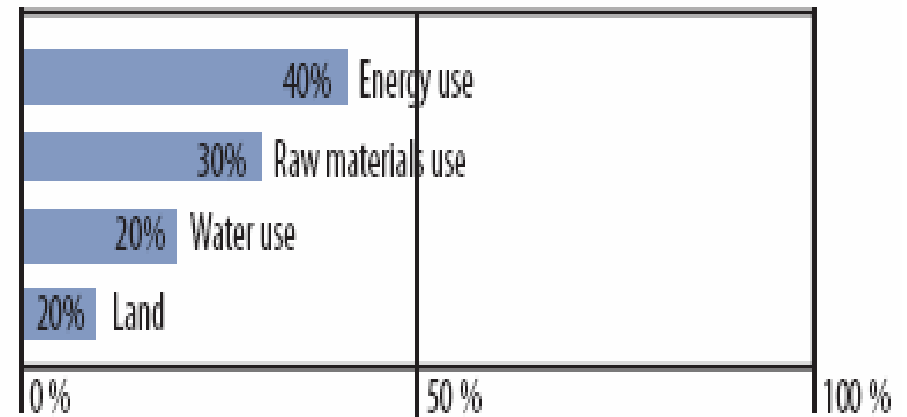
The building and construction market

- 5-15 % of direct employment (111 million jobs)
- Investment US\$ 3000 billion/year (10+% of GDP)
- To growth markets: Brazil, China and India (~10%)

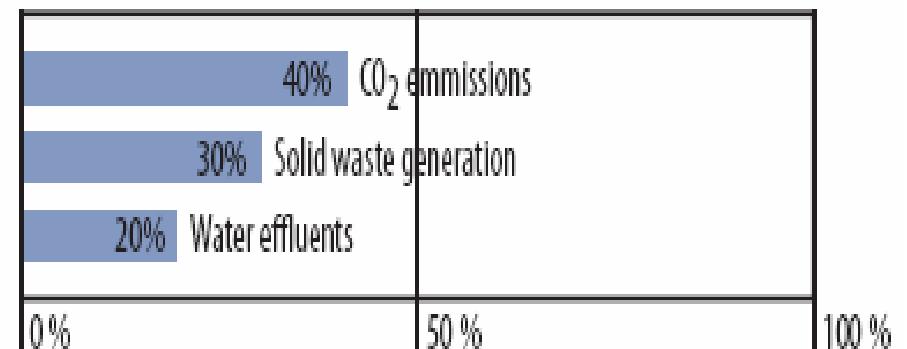


The built environment

SHARE OF THE BUILT ENVIRONMENT IN RESOURCE USE

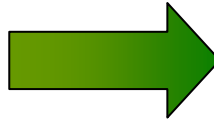


SHARE OF THE BUILT ENVIRONMENT IN POLLUTION EMISSION



Existing efforts

- 65+ private sector initiatives
- 40+ Government programmes
- 100+ NGO, R&D organizations
- ~ 35 codes & standards



WBCSD, USGBC, GBCK, BRANZ
EU, US, Nordics, Netherlands, Thailand
CIB, iiSBE, ENCORD, DBI, Tekes
LEED, CASBEE, BREEAM, etc

- *Life Cycle Approach through a broad partnership*
- *Global and sector cross-cutting initiative*
- *Focus on common and worldwide challenges*
- *Move beyond recommendations towards implementation*

SBCI objectives

1/ A common platform

Provide a common platform to all building and construction stakeholders for addressing sustainability issues of global significance.

2/ Establish baselines

Establish globally acknowledged baselines for sustainable building and construction practices based on the life cycle approach.

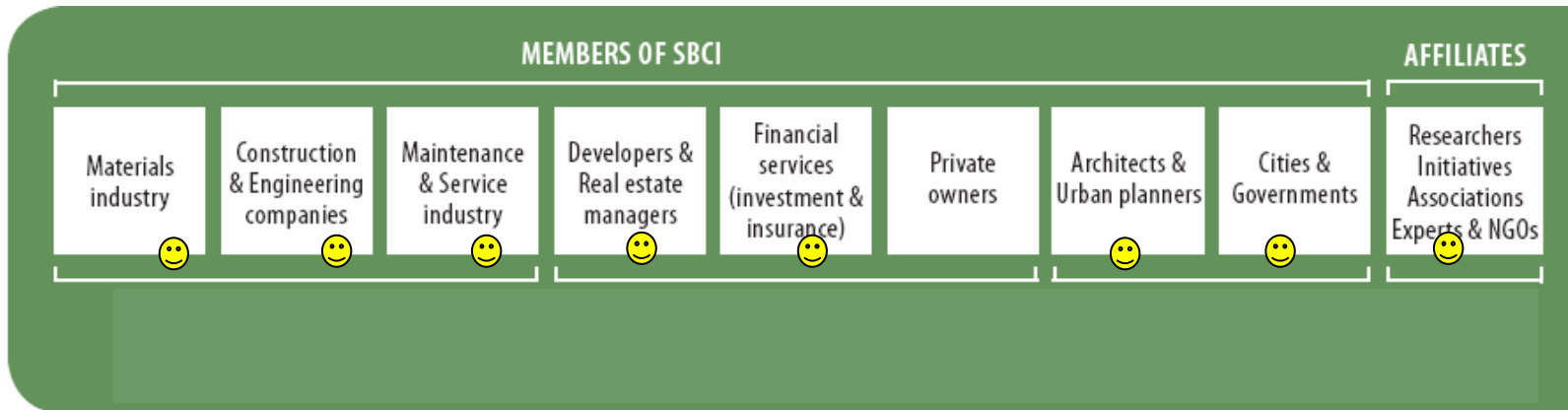
3/ Tools & strategies

Develop tools and strategies for achieving a wide acceptance and adoption of sustainable building practices throughout the world.

4/ Implementation

Promote, to key stakeholders, adoption of the above tools and strategies evaluated through pilot project.

The SBCI Members



International: US\$ 30,000

National: US\$ 15,000

Others: US\$ 5,000

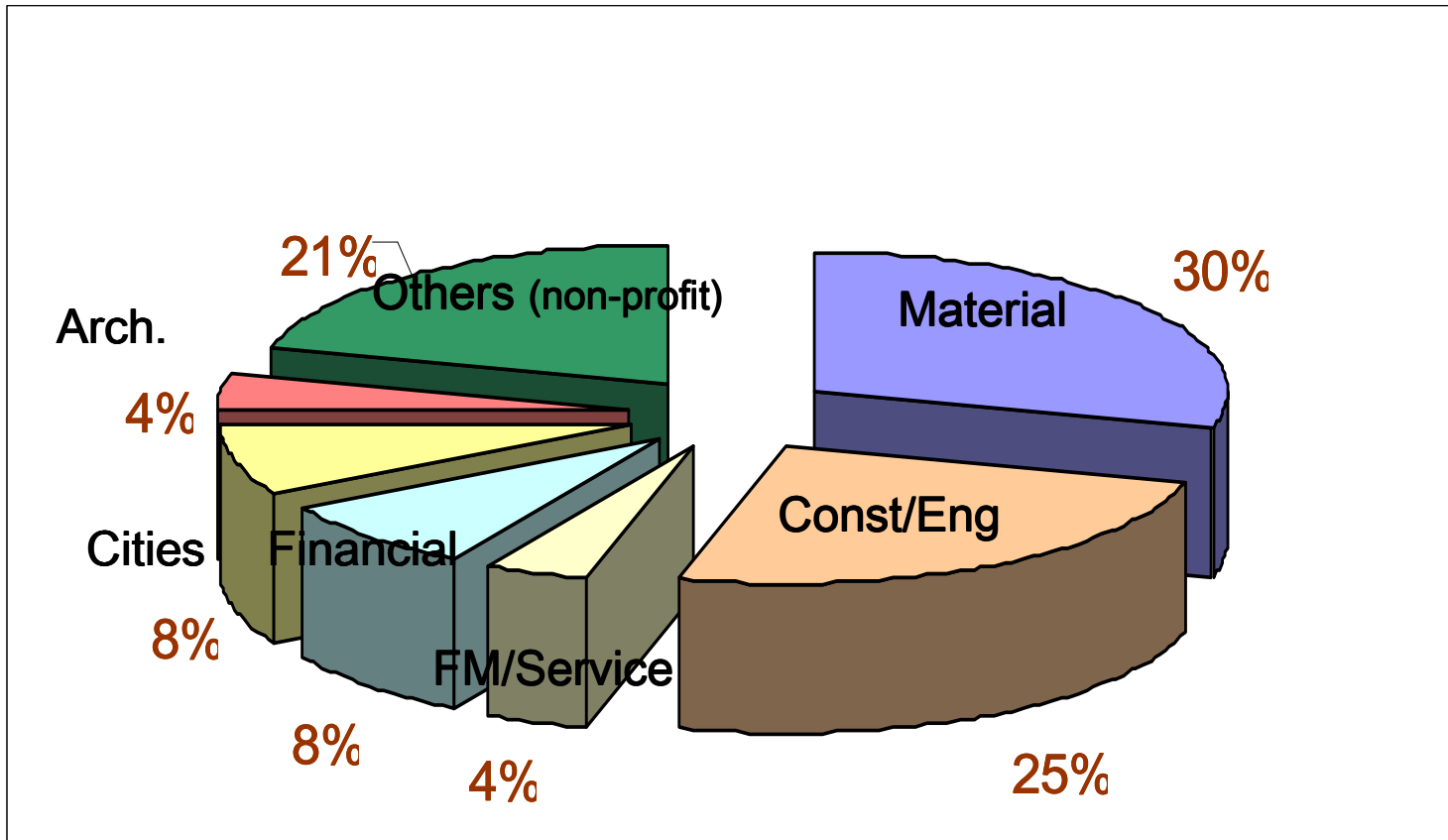
Partners: Based on mutual benefits;
Substantial value to SBCI

Members (as of 26 June 2006)

- Ademe
- Alma Stone
- American Forest & Paper Association
- Arcelor
- Corus Steel
- Bao Steel
- Norsk Hydro Al.
- Broad Air Cond.
- City of Agadir
- City of Madrid
- IISI
- FIDIC
- US Green Building Council
- Gravel
- Monplaisir
- Lafarge
- Lend Lease
- Martinet
- ONEP
- Schneider Electric
- Skanska
- Sinotech
- BNP Paribas



Member Breakdown



SBCI functional structure

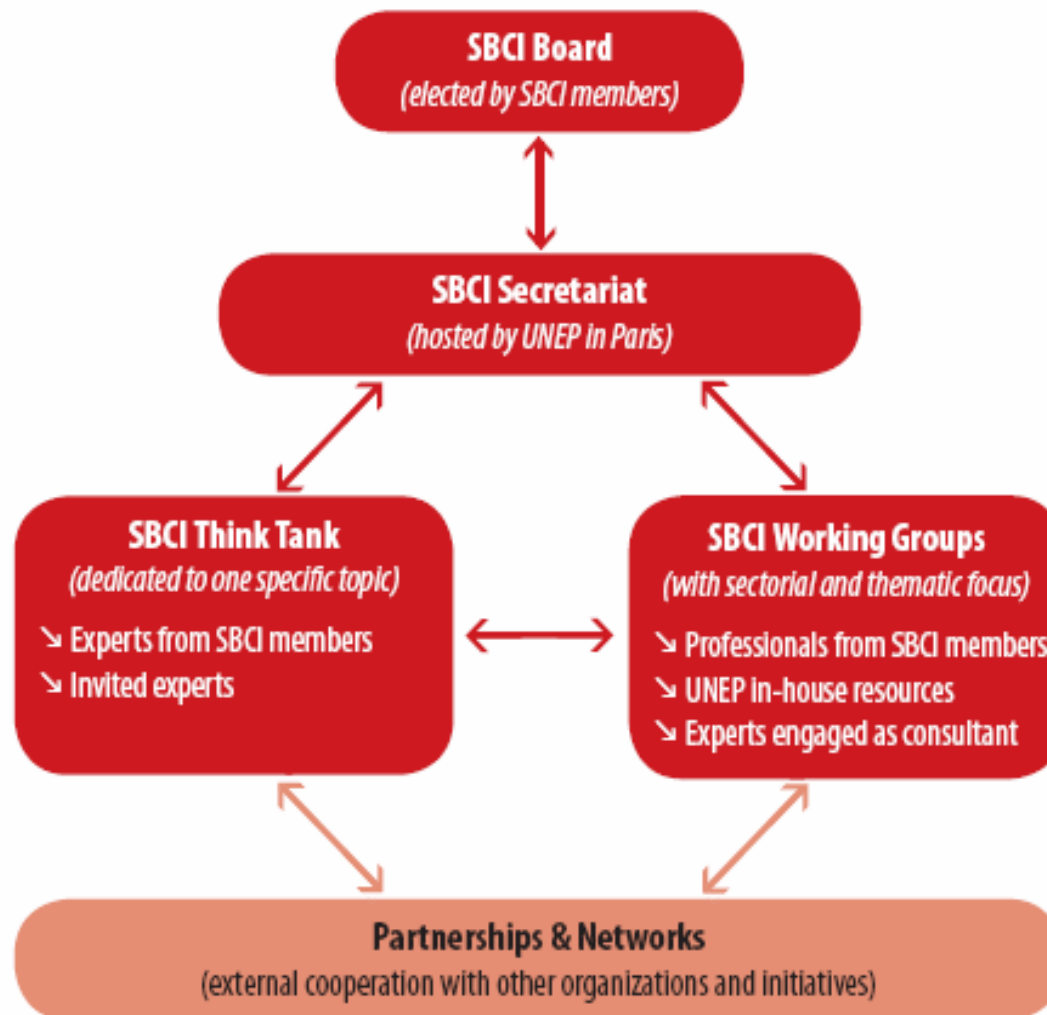
SBCI Charter

Formal ground for SBCI set up and operation

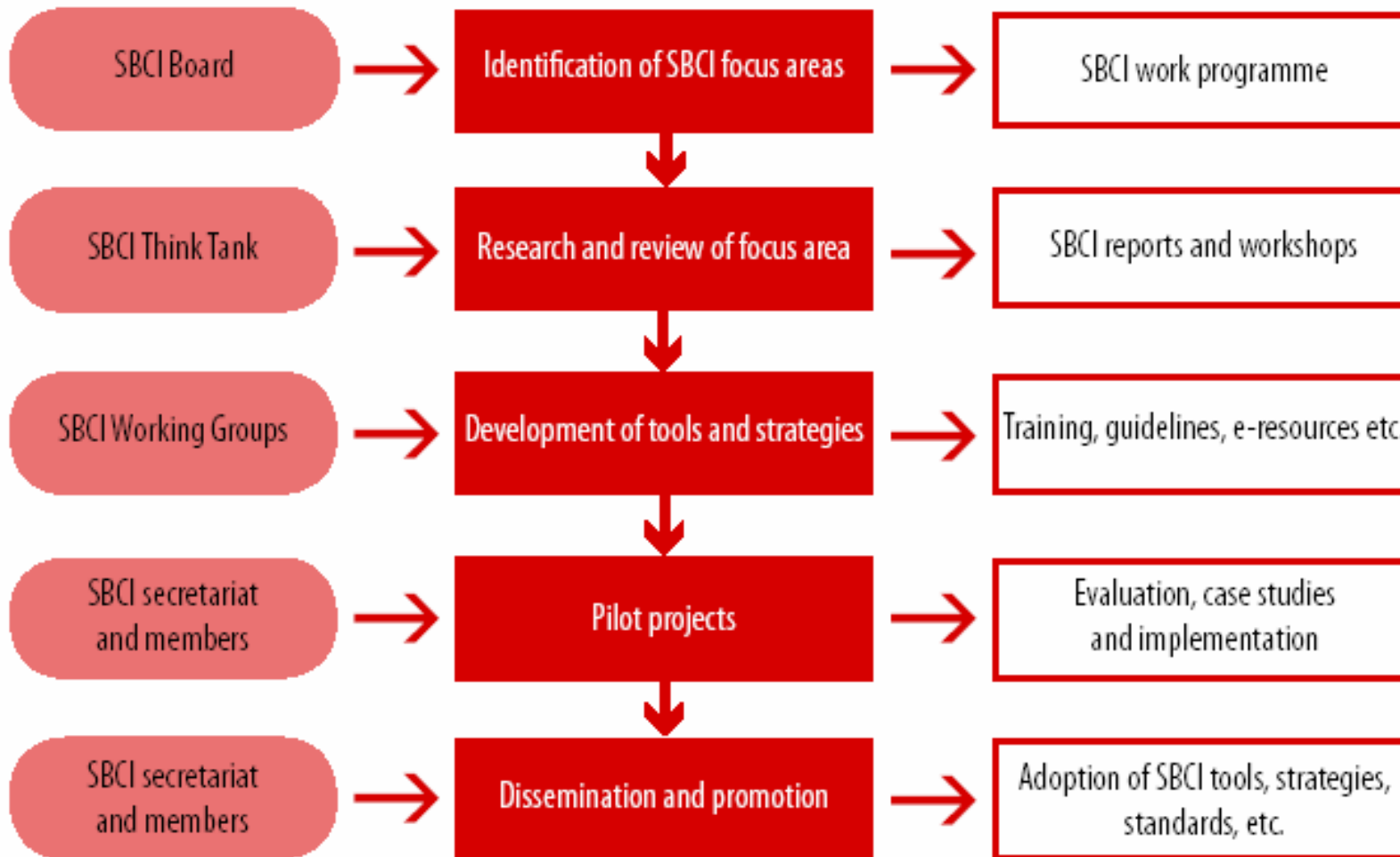
Adopted at first SBCI board meeting (April 2006)

SBCI Work Programme & Budget

Formulated, reviewed & adopted on a yearly basis



Organization of SBCI regular work programme



Additional activities: Activities supporting SBCI outside focus areas may be undertaken as partnerships



Focus Areas 2006/07

Focus Area 1:

Qualify buildings and construction activities as eligible activities for support under the flexible mechanisms of the Kyoto protocol.



- ✓ Background review
- ✓ Think Tank & Working Group
- ✓ Algeria & UK CDM/JI projects

Focus Area 2:

Develop and promote *economic incentives for a life cycle approach (LCA)* in design, construction and financing of buildings, so as to *create market conditions* favourable to buildings that are optimized from a life cycle perspective.



- ✓ **Global Dialogue (UNEP FI PWG)**
- ✓ Think Tank / Working Group
- ✓ Public finance mechanisms

Outputs

Strategic reports

SBCI strategic reports are published by the Think Tank and describes the work and findings of the Think Tank within each Focus area it addresses. Approximately two reports will be issued per year.

Tools & Strategies Briefings

SBCI Tools & Strategies Briefings are presenting the results of the work done by each working group. These can be in the form of guidelines, project proposals, electronic resources, training materials etc. Approximately two briefings will be issued per year.

Workshops

SBCI Workshops will be organised on a regular basis (initially two times per year) to present, discuss, and if suitable provide training on the current focus areas of the Initiative.

Pilot projects

SBCI Projects will be conducted as part of the regular work programme. SBCI members will be invited to support, take active part in the projects, and take part of the results through direct invitations and briefings.

Network Briefings

Prepared by SBCI Secretariat and published quarterly in electronic format, SBCI Network Briefings will provide members with news and activities concerning the Initiative.

Consultations

SBCI consultations will be organised with key stakeholders, international organizations, governments, industry sector initiatives etc. to present and promote the SBCI agenda and output. SBCI consultations will be organized as required, normally 2-3 times per year.

SBCI website

The website of SBCI will present the Initiative to the world, and providing members with links, tools and resources on sustainable building and construction.

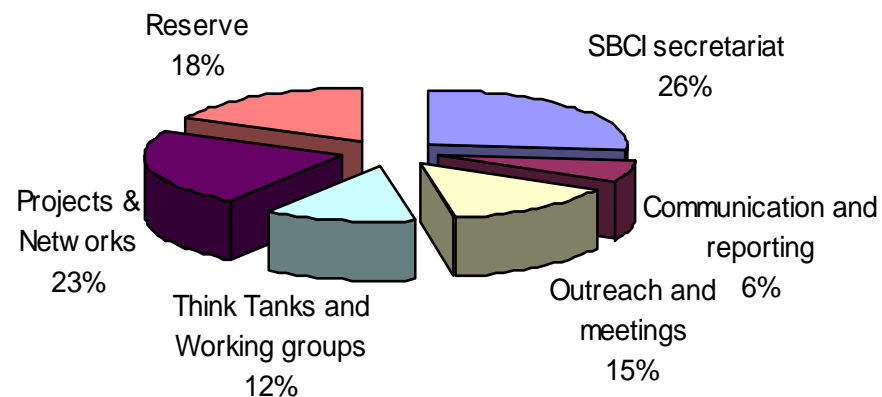
Annual meetings

SBCI annual meetings are organised with the entire SBCI membership.



SBCI Budget 2006

Income 2006	US\$
Member fees	365,000
Direct UNEP Support	85,000
Total	450,000



Expenses	2006 Costs (US\$)
SBCI secretariat (staff/overhead)	120,000
Communication and reporting	27,000
Outreach and meetings	66,000
Think Tanks and Working Groups	55,000
Projects & Networks	102,000
Reserve	80,000
TOTAL;	450,000

For more information please contact:

SBCI Secretariat
Sustainable Consumption & Production Branch
Division of Technology, Industry and Economics
United Nations Environment Programme

<http://www.unep.fr>
E-mail: sbc@unep.fr

Be where the future takes shape, be a member of SBCI !

