

STARTING THE CONVERSATION ...



GLOBAL TRENDS



Welcoming 2.5 million new people by 2050...

with rising incomes increasing consumption...

36% increase in energy demand by 2030

70% food demand increase by 2050

60% water demand increase by 2050


and a greater demand for water in food and energy sectors...

Water needs for power production to rise 85% by 2035

Irrigation doubling by 2050 to meet food demands

when we might face a 40% global shortfall in water supply by 2030

... in a context of climate change



WHAT IS A NEXUS?

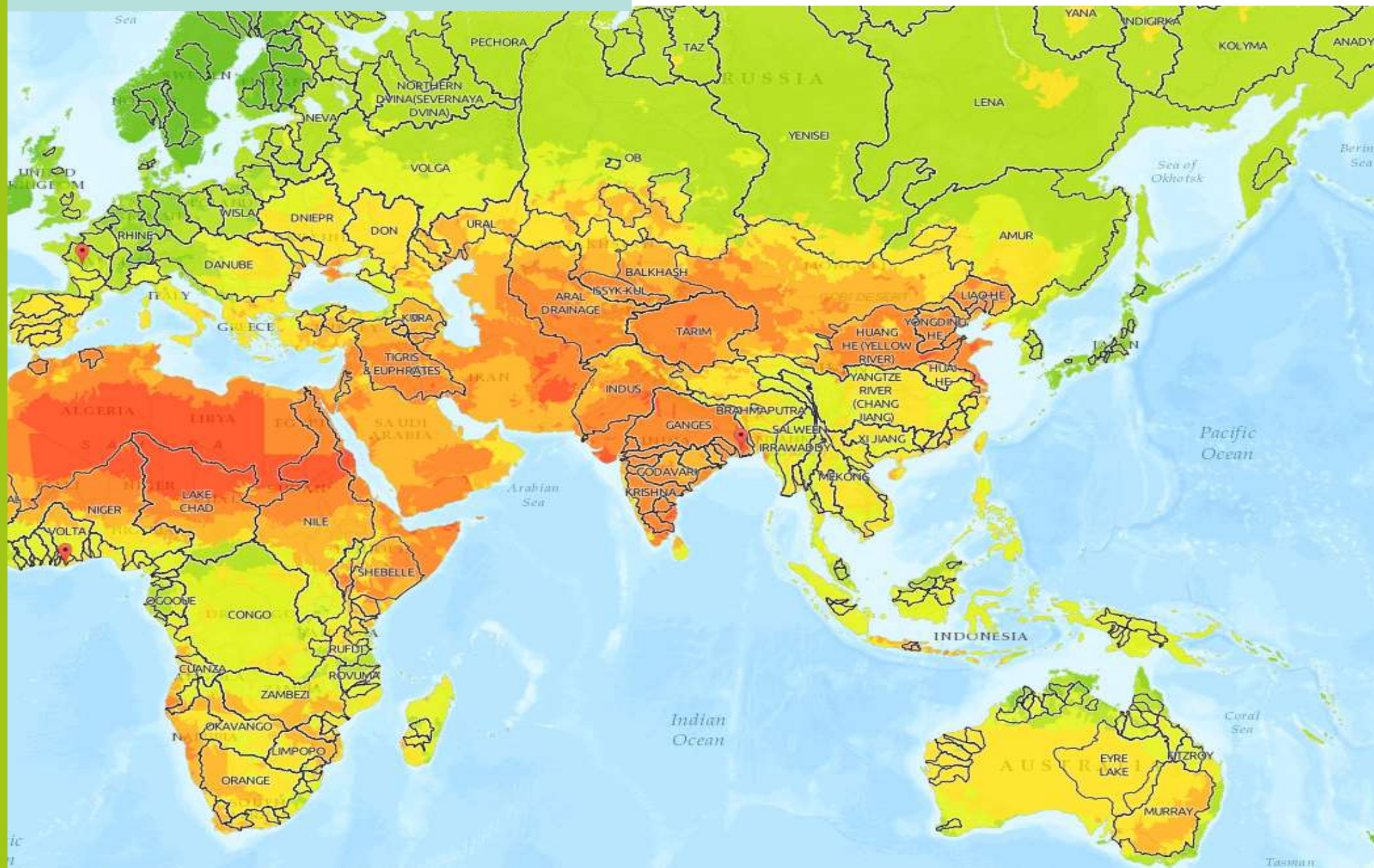


RENEWABLE ENERGY IN THE WATER, ENERGY & FOOD NEXUS





KFW DEG

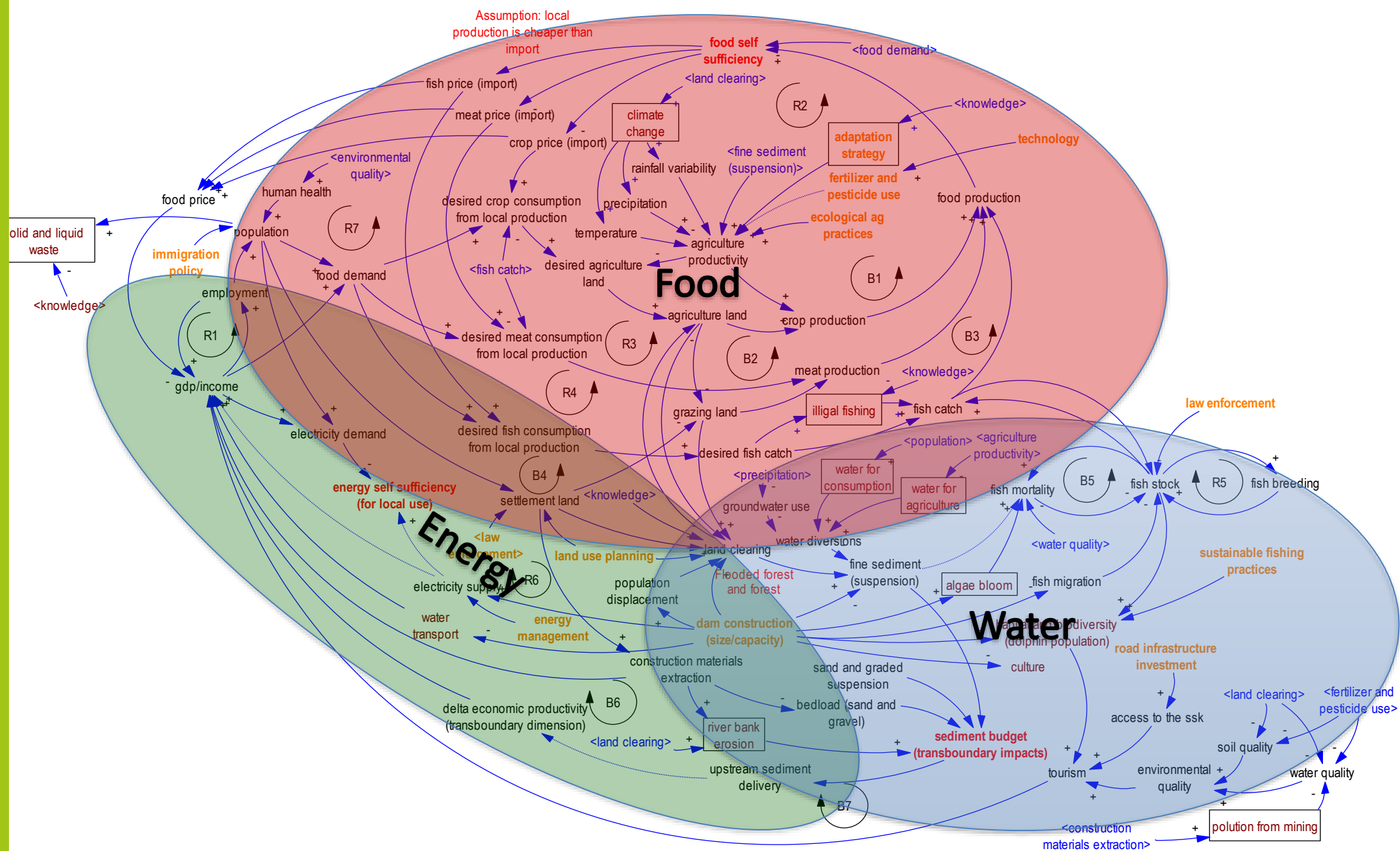


An aerial photograph of a rural landscape. A river flows through the upper right portion of the image. Below the river, a road or path runs horizontally across the middle. To the left of the road is a small village with several buildings. The majority of the landscape is composed of a patchwork of green and brown fields, likely agricultural land. The lighting suggests it might be late afternoon or early morning, with long shadows and a warm, golden light.

WHAT IS WORKING?

WHAT ARE SOME CHALLENGES?

FOOD-ENERGY-WATER RISKS IN CAMBODIA



LOOK FOR ...

Risks, vulnerabilities and opportunities at different scales

Insights, not perfect predictions

REAL options to act. Ways to adapt, not to 'fix'

